



RKD NEDERLANDS
INSTITUUT VOOR
KUNSTGESCHIEDENIS



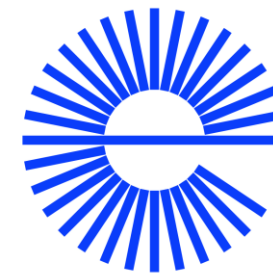
Linked data applications of RDA in the Netherlands

RKD – Netherlands Institute for Art History & Podiumkunst.net

National Digital Heritage Strategy & Reference Architecture

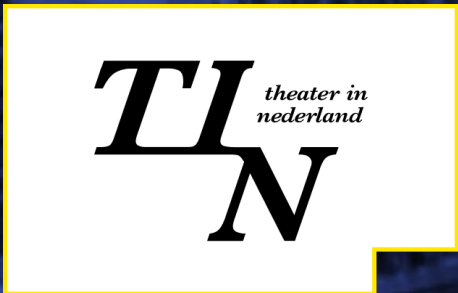


<https://netwerkdigitaalerfgoed.nl/>



**dutch digital
heritage
network**

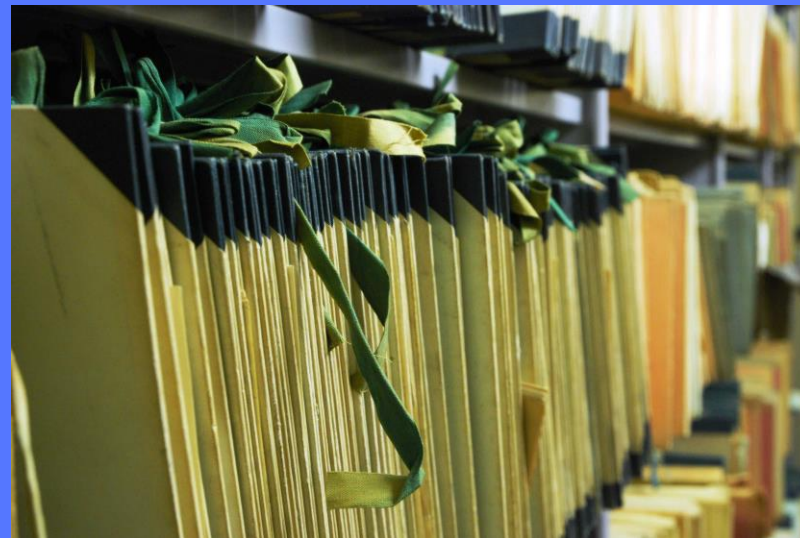
Podiumkunst.net



Vision

Enable the performing arts sector in the Netherlands to share their digital collections and stimulate reuse

Performing arts collections



Approach & method



The Podiumkunst Application Profile

✓ composer agent of work

~~composer collective agent of work~~

~~composer corporate body of work~~

~~composer family of work~~

~~composer person of work~~

~~composer agent of work of~~

~~composer collective agent of work of~~

~~composer corporate body of work of~~

~~composer family of work of~~

~~composer person of work of~~

Guidance > [Resource description](#) > [Effective description](#)

Effective description

Table of contents

- [Effective description of an information resource](#) →
- [Effective description of a resource entity](#) →
- [Selection of entities and elements for an effective description](#) →

Effective description requires that metadata is well-formed.

For general guidance on well-formed data and conformance with RDA, see [Guidance: Well-formed RDA](#) →.

Next steps

- Elaborate the different layers of the effective description
- Formulate entity boundaries
- Work out how collections with less detailed descriptions can be included in the graph
- Add relevant examples, templates and guidelines
- Add application profiles for the Agent class (and/or its subclasses)

More information

- The application profile: <https://podiumkunstnet.github.io/ApplicationProfileRDA/>
- Podiumkunst linked data: <https://podiumkunst.triply.cc/>
- Podiumkunst knowledge base:
<https://www.podiumkunst.net/kennisbank/standaardisatie/>
- Dataset Dutch classical musical works:
https://data.muziekschatten.nl/zoekmodule_NL_klassiek.html
- Medium of performance vocabulary:
https://data.muziekschatten.nl/zoekmodule_uitvoeringsmedia.html

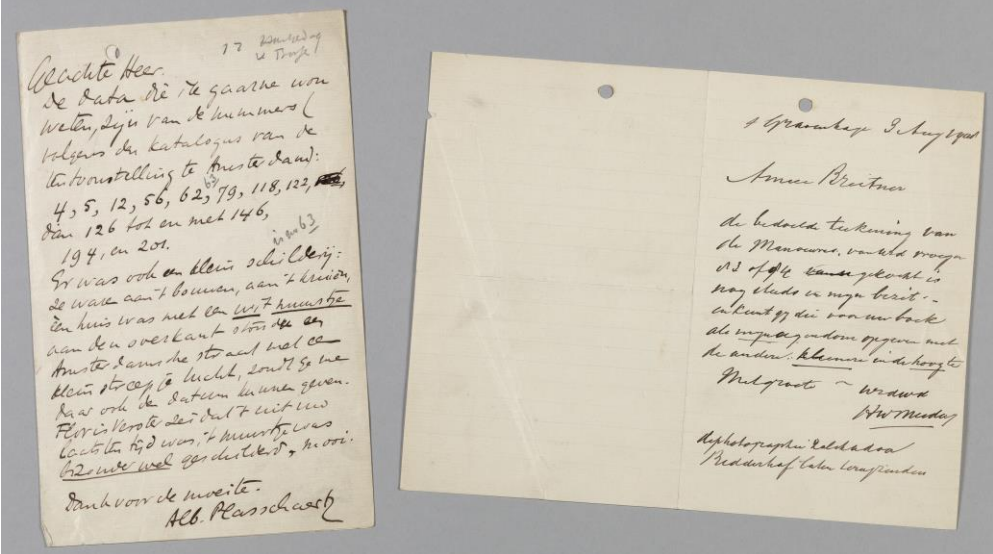
About the RKD



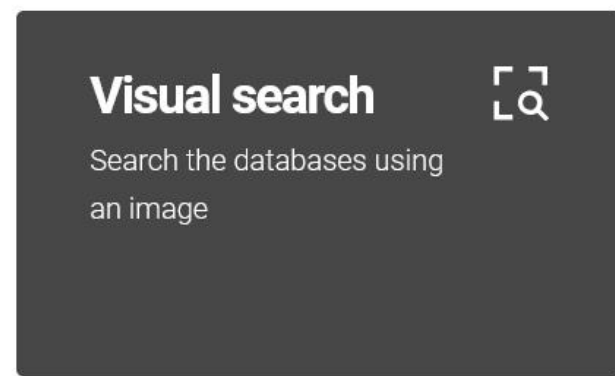
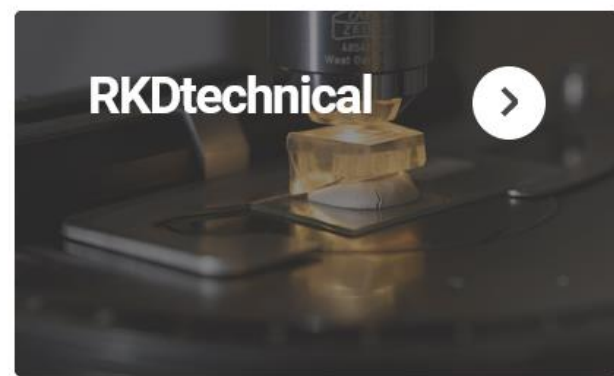
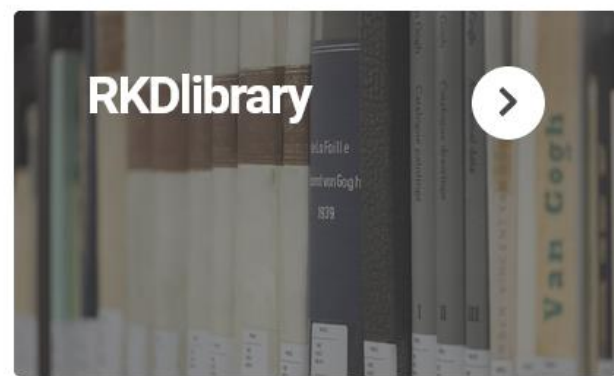
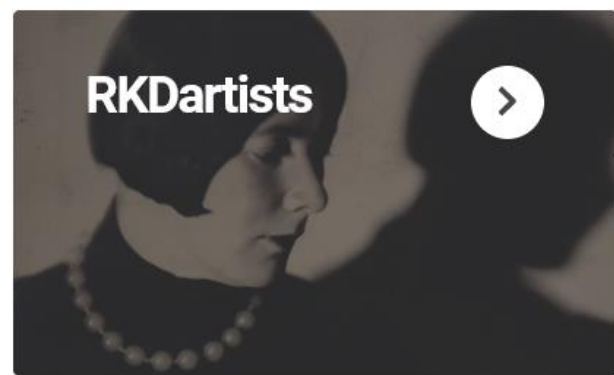
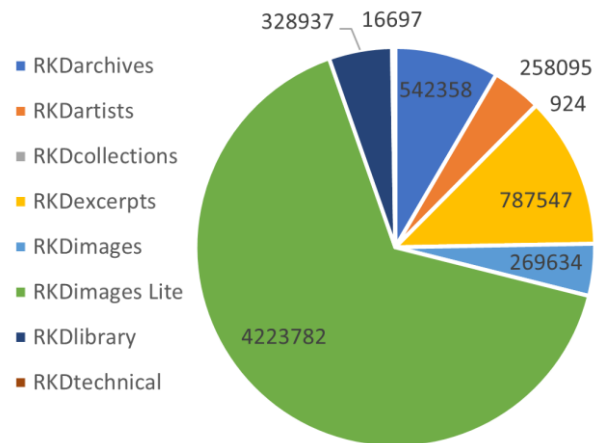
The RKD is the knowledge centre for the visual arts of the Low Countries and provides worldwide access to knowledge, research and information to museums, academic community and general public



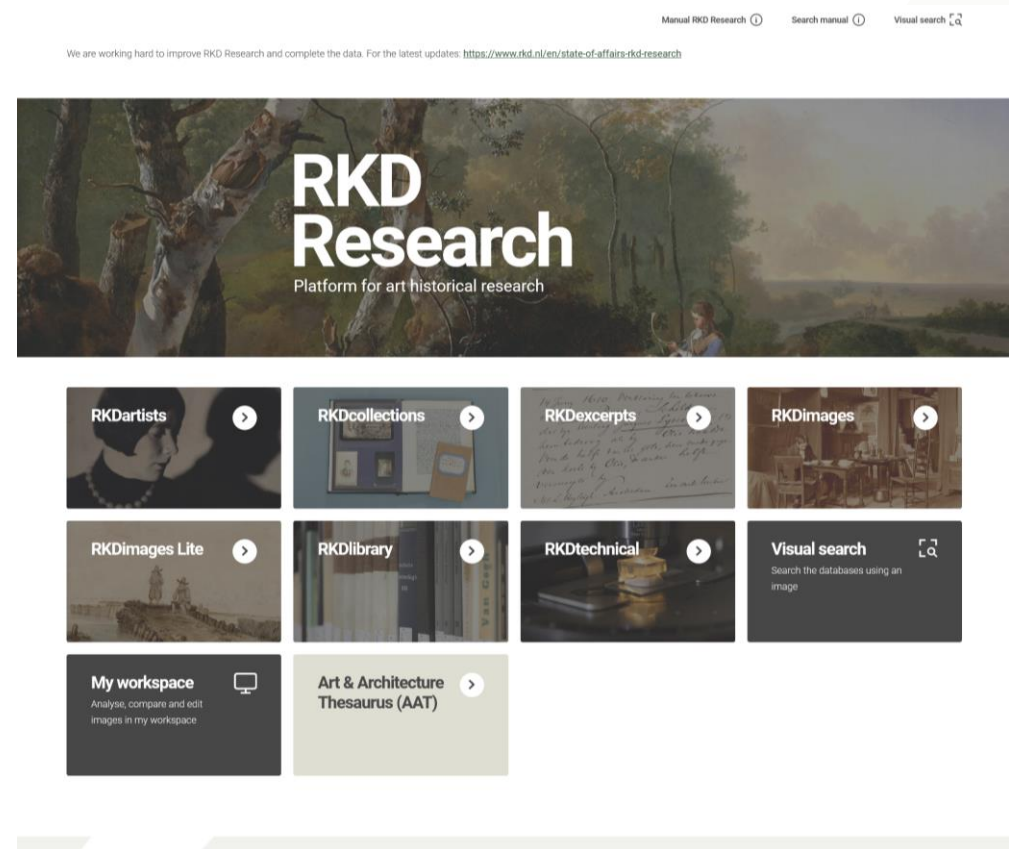
Collections



RKD databases



RKD Research



RKDlibrary & RDA



Titel, auteur, impressum, collatie		Reeks, annotatie, ISBN	Samenvatting
Titel en auteur			
Lidwoord			
Titel	Meesterversalers		
Auteursvermelding			
Auteur	Voskuil, Bert		Functie
Illustrator			Functie
Corp.auteur			Functie
Editie			
Editie			
Nummering			
Nummering			
Impressum			
Plaats	Leeuwarden		
Uitgever	Just Publishers		
Jaar	2021		
Plaats van druk			
Drukker			
Collatie			
Aantal			
Illustraties			
Pagina's	269 pagina's, [16] pagina's platen		
Fysieke kenmerken			
Formaat	21 cm		
Begeleidend materiaal			

```

<record prirref="351783" created="2022-08-30T08:42:06Z" modifica
<bibliographical_form>Boek [BV]</bibliographical_form>
<citeerafkorting>Voskuil 2021A</citeerafkorting>
+<copy_number></copy_number>
<copy_number_lref>445715</copy_number_lref>
<dimensions>21 cm</dimensions>
<author>
  <author.name>Voskuil, Bert</author.name>
  <author.name_lref>243986</author.name_lref>
</author>
<bindpricenumbers>
  <isbn>978-90-8975-484-4</isbn>
</bindpricenumbers>
<keywords>
  <keyword.contents_lref>80217</keyword.contents_lref>
</keywords>
<keywords>
  <keyword.contents_lref>81095</keyword.contents_lref>
</keywords>
<keywords>
  <keyword.contents_lref>66978</keyword.contents_lref>
</keywords>
<keywords>
  <keyword.contents_lref>80210</keyword.contents_lref>
</keywords>
<keywords>
  <keyword.contents_lref>6596</keyword.contents_lref>
</keywords>
<keywords>
  <keyword.contents_lref>81600</keyword.contents_lref>
</keywords>
<language_code>Nederlands [TA]</language_code>
<material_type>Boekvorm [MS]</material_type>
<pagination>269 pagina's, [16] pagina's platen</pagination>
<place_of_publication>Leeuwarden</place_of_publication>
<prirref>351783</prirref>
<publisher.linkref>145853</publisher.linkref>
<sort_year>2021</sort_year>
<title>Meesterversalers</title>
<year_of_publication>2021</year_of_publication>
</record>
</metadata>
  
```

Subject	Predicate	Object
https://data.rkd.nl/library/ ... x		
https://data.rkd.nl/library/351783	http://rdaregistry.info/Elements/m/P30004	[...4ca]
https://data.rkd.nl/library/351783	http://rdaregistry.info/Elements/m/P30011	[...6c4]
https://data.rkd.nl/library/351783	http://rdaregistry.info/Elements/m/P30011	2021
https://data.rkd.nl/library/351783	http://rdaregistry.info/Elements/m/P30088	[...3aa]
https://data.rkd.nl/library/351783	http://rdaregistry.info/Elements/m/P30134	Meesterversalers
https://data.rkd.nl/library/351783	http://rdaregistry.info/Elements/m/P30135	https://data.rkd.nl/library/work351783
https://data.rkd.nl/library/351783	http://rdaregistry.info/Elements/m/P30135	https://data.rkd.nl/library/work351783
https://data.rkd.nl/library/351783	http://rdaregistry.info/Elements/m/P30169	21 cm
https://data.rkd.nl/library/351783	http://rdaregistry.info/Elements/m/P30182	269 pagina's, [16] pagina's platen
https://data.rkd.nl/library/351783	http://rdaregistry.info/Elements/m/P30330	[...78a]
https://data.rkd.nl/library/351783	http://rdaregistry.info/Elements/m/P30330	[...7df]
https://data.rkd.nl/library/351783	http://rdaregistry.info/Elements/m/P30420	[...095]
https://data.rkd.nl/library/351783	rd:type	http://rdaregistry.info/Elements/c/C10007
https://data.rkd.nl/library/351783	prov:generatedAtTime	2022-10-06T10:00:42Z



Next steps

- Improve identification of Works, Expressions, Manifestations, Items
- Examine impact on RKD cataloguing practices, update cataloguing manual, familiarize cataloguers with data model
- Some data cleanup
- Add values from selected RDA value lists
- Decide what to do with square brackets, ISBD punctuation etc. in data values

More information

- RKD Research: <https://research.rkd.nl/>
- RKD Knowledge Graph: <https://rkd.triply.cc/>
- Questions? wintermans@rkd.nl





Concluding remarks

- Every application its own profile!
- Modelling of specialist collections can provide the RDA community with interesting feedback
- Great need for reliable datasets, especially for Works and Expressions
- Need for linked data examples using RDA and for a place to discuss data modelling issues

Thank you for your attention!



RKD – Nederlands Instituut voor Kunstgeschiedenis

Prins Willem-Alexanderhof 5
2595 BE Den Haag
Nederland

Contact

T: 070 3339777

E: info@rkd.nl

W: www.rkd.nl

