



הספרייה הלאומית
The National Library of Israel



Record imports
with the
translation power
of the RDA Registry

Ahava Cohen
Head of Cataloging Section,
NLI

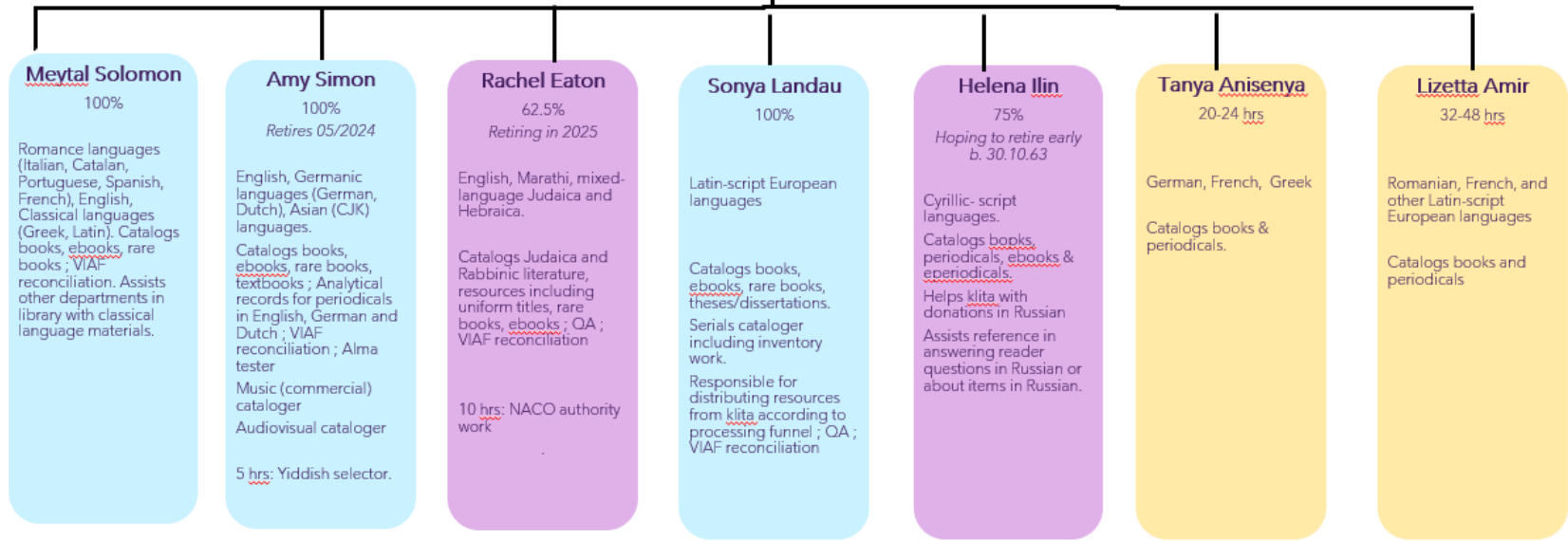


Foreign Language Cataloging Organization chart

■ NLI monthly/hourly
 ■ HUJI
 ■ Volunteer
 Unfilled/lost

Ester Taga
Team Leader
100%

Management ; Project management ; QA ; VIAF reconciliation ; Romanization of Hebrew ; Handling legacy issues ; Cataloging & authority adviser ; General cataloging ; Cataloging languages with no coverage ; Point-of-contact for cataloging enquiries from NLI and outside



Unfilled position
100%
European language cataloger (authorized pre-Corona as German cataloger position)

Lost position
37.5%
From Rachel Eaton's former 100%

Lost position
25%
From Helena Ilin's former 100%

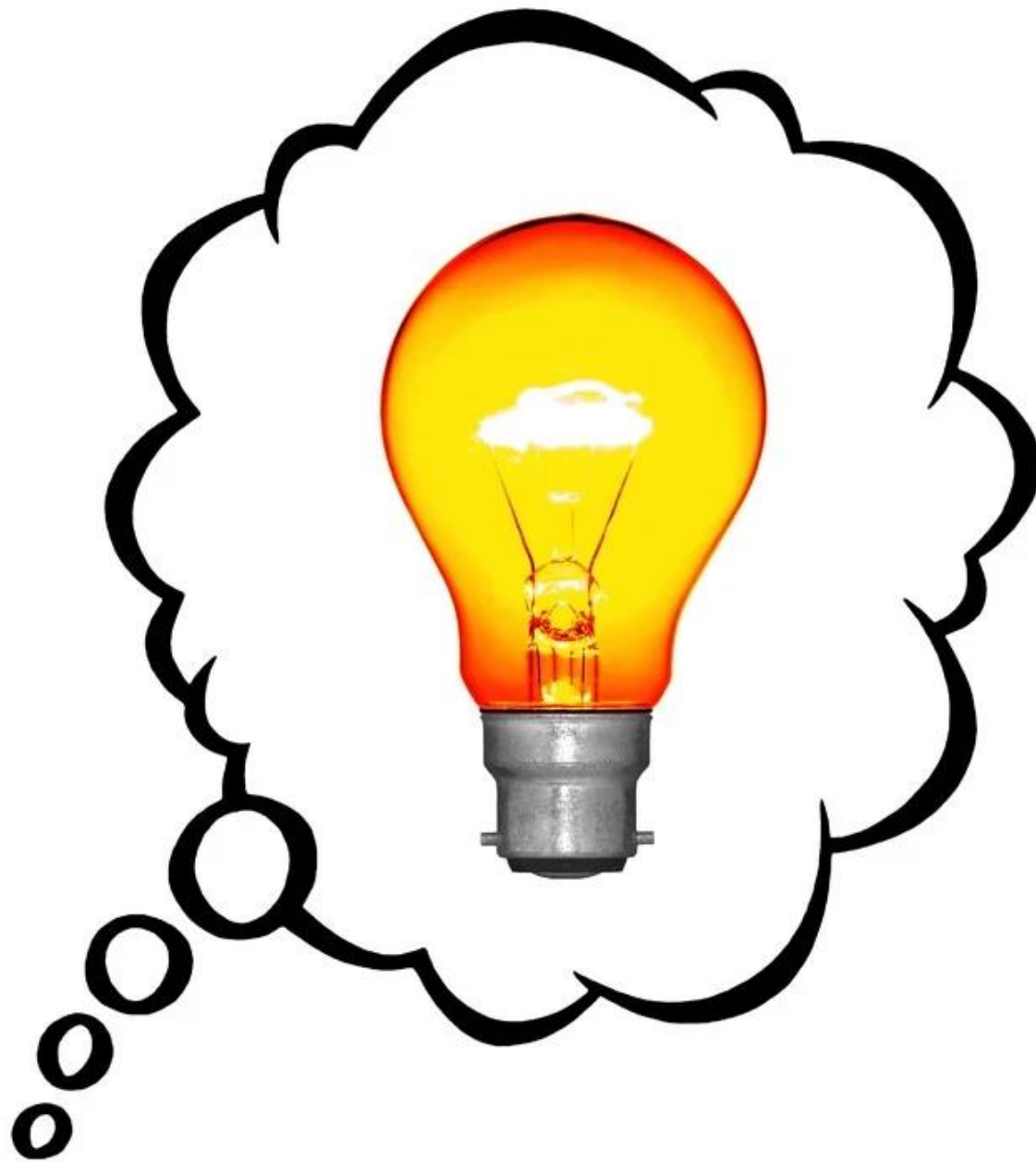
Vacated project position
100%
From Esther Blatman

Upcoming loss
40%-100%
From Amy Simon's former 100%





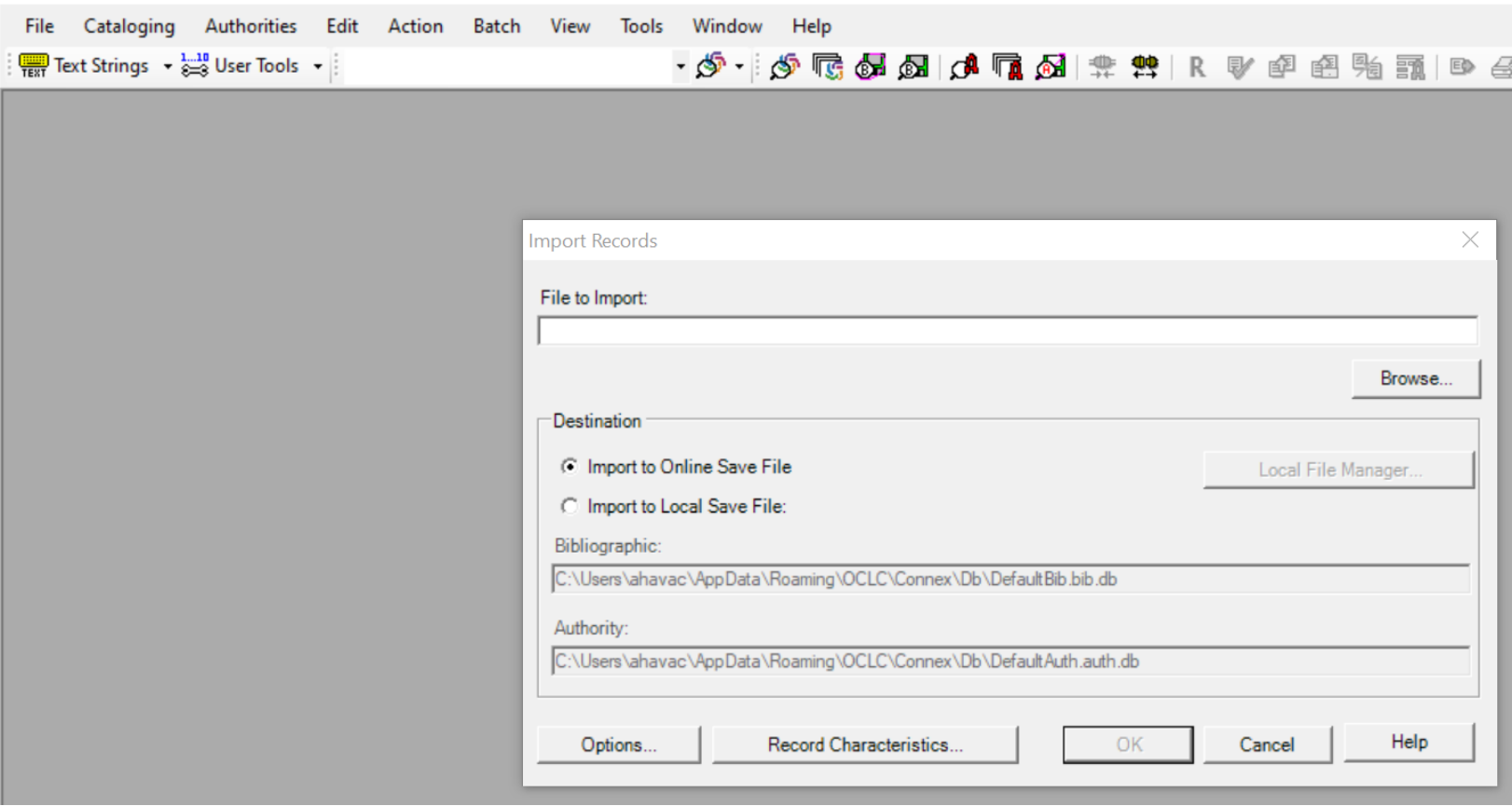




#	CURIE	Label	Definition	Status
#	rdacarx:1001	"activity card"	"A unit of extent that is a card printed with words, numerals, or pictures to be used by an individual or a group as a basis for performing a specific activity."	Published
#	rdacarx:1002	"atlas"	"A unit of extent that is a volume of maps or other cartographic content with or without descriptive text."	Published
#	rdacarx:1003	"case"	"A unit of extent that consists of a box containing bound or unbound resources."	Published
#	rdacarx:1004	"chart"	"A unit of extent that consists of a two-dimensional representation of data in graphic or tabular form."	Published
#	rdacarx:1005	"coin"	"A unit of extent that consists of a piece of metal stamped by government authority for use as money."	Published
#	rdacarx:1006	"collage"	"A unit of extent that consists of a work in two dimensions or very low relief that was made by affixing paper, fabrics, photographs, or other materials onto a flat surface."	Published
#	rdacarx:1007	"column"	"A unit of extent that consists of one of two or more vertical sections of text appearing on the same page or leaf."	Published
#	rdacarx:1008	"diagram"	"A unit of extent that is a geographic representation of numeric data, or of the course or results of an action or process."	Published
#	rdacarx:1009	"diorama"	"A unit of extent that consists of a three-dimensional representation of a scene created by placing objects, figures, etc., in front of a two-dimensional painted background."	Published
#	rdacarx:1010	"drawing"	"A unit of extent that consists of a visual work produced by drawing, which is the application of lines on a surface, often paper, by using a pencil, pen, chalk, or some other tracing instrument to focus on the delineation of form rather than the application of colour."	Published
#	rdacarx:1011	"exhibit"	"A unit of extent that consists of objects on display, along with the display environment of cases, labels, etc."	Published
#	rdacarx:1012	"flash card"	"A unit of extent that consists of a card, or digital representation of a card, carrying words, numerals, pictures, etc., designed for rapid display as an aid to learning."	Published
#	rdacarx:1013	"folded sheet"	"A unit of extent that consists of a sheet designed to be read in pages when folded."	Published
#	rdacarx:1014	"game"	"A unit of extent that consists of a set of objects designed for manipulation according to prescribed or implicit rules for education, entertainment, or therapy."	Published
#	rdacarx:1015	"globe"	"A unit of extent that is a depiction of the earth or other celestial body, real or imaginary, on the surface of a sphere."	Published
#	rdacarx:1016	"icon"	"A unit of extent that consists of an image that portrays a sacred entity and that is itself regarded as sacred."	Published







and dl:y and ll:eng not mt:elc not la:per not la:rus not la:heb not la:ara not la:srp not la:yid not la:ukr not lv:8 not lv:j not lv:3 not lv:m .1

and ll:eng not mt:elc not la:per not la:rus not la:heb not la:ara not la:srp not la:yid not la:ukr not lv:8 not lv:j not lv:3 not lv:m .2

and cs=BDF and ll:fre not mt:elc not la:per not la:rus not la:heb not la:ara not la:srp not la:yid not la:ukr .3

and ll:fre not mt:elc not la:per not la:rus not la:heb not la:ara not la:srp not la:yid not la:ukr .4

```

rule "Replace 300.a part 1"
priority 85
  when
    (exists "300.a.*p.*")
  then
    replaceContents "300.a.p.*" with "pages"
    changeSubField "300.a" to "a"
    changeSubField "300.b" to "b"
    changeSubField "300.c" to "c"
    changeSubField "300.e" to "e"

```

end

```

rule "Replace 300.a part 2"
priority 84
  when
    (exists "300.a.1 vol. (*)")
  then
    replaceContents "300.a.1 vol. (" with ""
    replaceContents "300.a.)" with ""
    changeSubField "300.a" to "a"
    changeSubField "300.b" to "b"
    changeSubField "300.c" to "c"
    changeSubField "300.e" to "e"

```

end

```

rule "Replace 300.b.*"
priority 83
  when
    (exists "300.b")
  then
    replaceContents "300.b.*" with "illustrations"

```

```

rule "Correct 260.c ©xxxx "
priority 88
  when
    (exists "260.c.©*0*|©*1*|©*2*|©*3*|©*4*|©*5*|©*6*|©*7*|©*8*|©*9*")
  then
    replaceContents "260.c., ©*" with ""
    copyField "260.c" to "264.{-,4}.c"
    replaceContents "260.c.*©" with "["
    replaceContents "260.c.\\" with "]"
    changeSecondIndicator "260" to "1" if (exists "260")
    changeField "260" to "264"
    replaceControlContents "008.{6,1}" with ""

```

end

```

rule "Correct 260.c DL "
priority 87
  when
    (exists "264.c.DL*") OR (exists "260.c.DL*")
  then
    replaceContents "260.c.DL " with "["
    replaceContents "260.c.\\" with "]"

    changeSecondIndicator "260" to "1" if (exists "260")
    changeField "260" to "264"

```

end

```

rule "change 260 to 264"
priority 86
  when
    (exists "260")
  then
    removeSubField "260.e"
    changeSecondIndicator "260" to "1" if (exists "260")
    changeField "260" to "264"

```


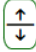
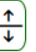
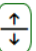
end



Languages

Arabic Catalan Danish Dutch **English** Estonian Finnish
French German Greek Hungarian Latvian Norwegian
Vietnamese

Concepts Index

#	 CURIE	↑↓ Label	↑↓ Definition	Status ↑↓
#	 rdacarx:1018	"leaf"	"A unit of extent that consists of a single bound or fastened sheet as a subunit of a volume; each leaf consists of two pages, one on each side, either or both of which may be blank."	Published
#	 rdacarx:1018	"feuillet"	"Unité d'étendue qui consiste en une seule feuille reliée ou attachée en tant que sous-unité d'un volume ; chaque feuillet comprend deux pages, une sur chaque face, dont l'une ou les deux peuvent être blanches."	Published
#	 rdacarx:1018	"Blatt"	"Eine Umfangseinheit, die aus einem einzelnen gebundenen oder befestigten Bogen als Untereinheit eines Bandes bestehend. Jedes Blatt besteht aus zwei Seiten, auf jeder Seite eine, die auch leer sein können."	Published





- יש מצבים בהם יש יותר מרשומה אחת לספר מאותה השנה כי מדובר במהדורות שונות.
- **ההחלטה:** במידה ומדובר באותה השנה והסיגנטורה היא C לא משנה איזו רשומה תיבחר, במידה ומדובר בסיגנטורה B רצוי לעשות רשומה חדשה.
- **שדה 245** ללא משפט אלריות C עפ"י כשברשומה מופיע המידע בשדות 700. אין לנו דרך לדעת איך זה כתוב בספר מבלי להסתכל בו.
- במידה ויש את השדה 240 הוא ללא תת שדה I, כיוון שמדובר בייבוא רשומות מגרמנית בלבד ראובן מוסיף את המידע הזה בתהליך הטעינה.
- **1#240** מתעדכן במידה ומדובר ב Article. חשבנו לא לשנות אותם (כי קשה להפוך את המילה הראשונה לאות גדולה).
- מעדכן שדות 3XX לאנגלית.
- **שדה 300:** במידה ומספר העמודים כולל בתוכו גם ספרות רומיות ללא הפרדה, רצוי לתקן כדי שתהיה בהירות במידע.
- הכנסה של תת שדה B illustrations
- לרוב אין מידע בא5x על תקצירים, הערות ביבליוגרפיות וכד' אף על פי שיש בספרים את המידע הנ"ל.
- "מתרגם" את ה-relators (100/700\$e) לאנגלית.
- מוחק שדה 710 כל עוד מכיל \$e=Verlag
- אם יש 490 אינדיקטור 0 ואין 830, מעתיק את המידע משדה הראשון לשני ומתקן אינדיקטורים (ומוחק x\$830 אם יש, ברגע של החתימה Imp).
- אם יש סיגנטורה B, יוצר שדה 751 על פי \$a26X (מוחק ב-751 סוגריים מרובעים אם יש ב-26X) ומוסיף תת שדה \$e place of publication. יש לשים לב בבדיקת הספר שהצורה של העיר היא הצורה המועדפת שלנו (על ידי לחיצה ב-F3)
- רוב המוחלט של הנושאים נמצאים בשדה 653. בשדה הזה יש שמות בסדר ההפוך שלנו שבשדה 600 (שם פרטי קודם, שם משפחה אחר כך, ולפעמים יש רק שם משפחה אם הבן אדם הוא ידוע). יש גם ב-653 נושאים שאנחנו רושמים בשדות 650/651... וגם מידע בנושא פורמט הספר. הוחלט להתייעץ עם אביעד אם למחוק את השדה 653.
- מחיקה שדות ותתי שדות מיותרים



Concepts Index

Show 25 entries

Search: title page

#	CURIE	Label	Definition	Status
#	rdaterm:1004	"added title page (Deprecated)"	"A title page preceding or following the title page chosen as the preferred source of information. (Deprecated)"	Deprecated
#	rdaterm:1014	"caption title"	"A title given at the beginning of the first page of the text or, for notated music, at the top of the first page."	Published
#	rdaterm:1078	"running title"	"A title, or abbreviated title, that is repeated at the head or foot of each page or leaf."	Published
#	rdaterm:1082	"series title page (Deprecated)"	"An added title page bearing a series title proper and usually, though not necessarily, other information about a series such as statement of responsibility, numeric designation, data relating to publication, title of the manifestation within the series. (Deprecated)"	Deprecated
#	rdaterm:1095	"title page (Deprecated)"	"A page at the beginning of a manifestation bearing a title proper and usually, though not necessarily, a statement of responsibility and data relating to publication. (Deprecated)"	Deprecated

Showing 1 to 5 of 5 entries (filtered from 213 total entries)

Previous 1 Next



**WHERE DO WE
GO FROM
HERE?**



"RDA is designed to take advantage of the efficiencies and flexibility in data capture, storage, retrieval, and display made possible with new database technologies. RDA is also designed to be compatible with the legacy technologies still used in many resource discovery applications."

