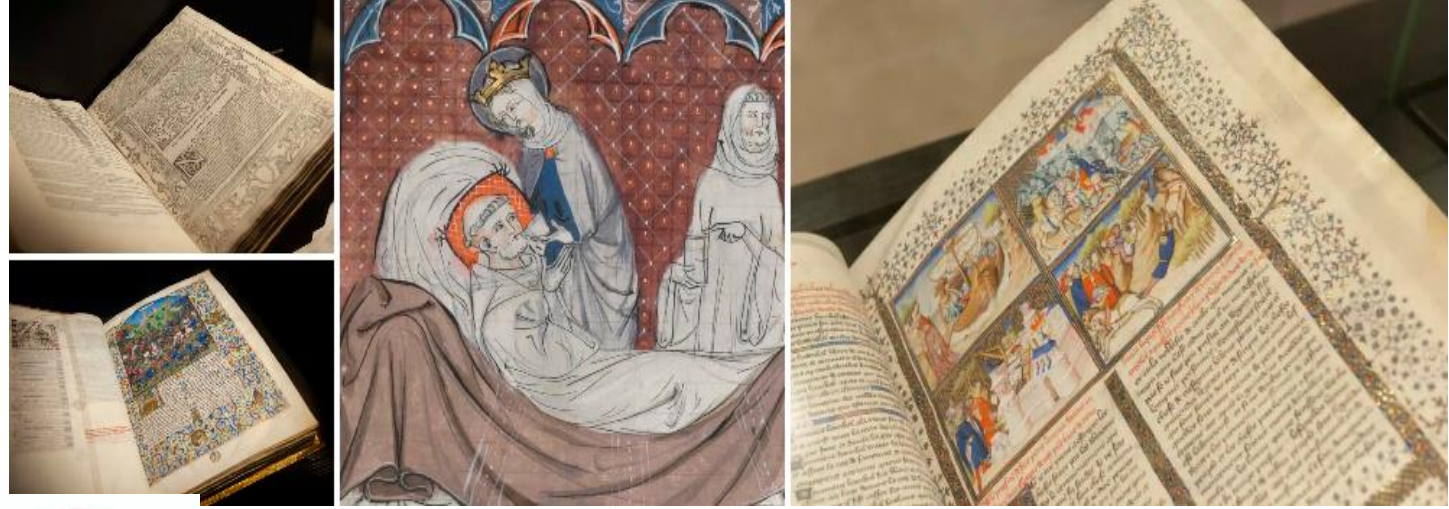


KBR  Koester de tijd
Protégeons le temps

KBR : Royal Library of Belgium

- Books, periodicals, newspapers
- Coins and medals
- Manuscripts
- Letters
- Old books
- Scores
- Prints
- Drawings



Cal

SOMMAIRE :
POÈTES FRANÇAIS
PAUL ELUARD
PIERRE REVERDY

THÉRÈSE AUBRAY	LUCIEN BECKER
RENÉ-GUY CADOU	CLAUDINE CHONEZ
ROBERT DELAHAYE	YANETTE DELETANG TARDIF
JEAN DESRIVES	LOUIS EMIE
JEAN FOLLAIN	MAURICE FOMBEURE
LOUIS GUILLAUME	RENÉ LACÔTE
ROGER LANNES	JEAN LE LOUËT
FERNAND MARC	MICHEL MANOLL
JEAN ROUSSELOT	ANDRÉ MORA
PATRICE DE LA TOUR DU PIN	ANDRÉ SILVAIRE

CHRONIQUES



Agency for bibliographic information

- **Responsible for cataloguing new arrivals**
 - Legal Deposit (approx 20.000 / year)
 - Acquisitions (approx 3.000 / year)
 - Gifts
- **Retrocataloging**

RDA

- **Transition started around 2022 (see 'RDA in Belgium', 2022)**
- **Application Profile**
- **Also patrimonial collections**

A	B	C	D	E	F	G	H	I	J	K	L	Notes
FRBR (Work Expression or Manif.	RDA element name	RDA element Identificatie	RDA element instructie	Obligation	champs dans l'idée de l'autorité ATUT	Local Marc field code (authority)	Local Marc field label (authority)	Repeat ability	Recording method: - Unstructured data - Structured data - (Local) identifier - URI-RWO	VES = Vocabulary Encoding Schemes (structured list of controlled values)	SES = String Encoding Scheme (rules that explain how to put together a string)	
1	W	appellation of work	http://rdaregistry.info/Elements/w/P10329	https://access.rdatoolkit.org/en-US	Y	ATUT 130a,f,l Exemple : 130\$a Romeo and		Title	N			Nom général for work, lde
2	W	preferred title of work	http://rdaregistry.info/Elements/w/P10223	https://access.rdatoolkit.org/en-US	Y	ATUT 130a	910\$a	Title	N	Unstructured data		is not 'title c
3	W	authorized access point for work	http://rdaregistry.info/Elements/w/P10331	https://access.rdatoolkit.org/en-US	Y	nous déterminons l'affichage ? Exemple : Romeo and Juliet		Title	N	Structured data		
4	W	identifier for work	http://rdaregistry.info/Elements/w/P10002	https://access.rdatoolkit.org/en-US	Y	ATUT 001 / 024 / 381u		Title	N	Structured data		
5	W	expression of work	http://rdaregistry.info/Elements/w/P10078	https://access.rdatoolkit.org/en-US	Y	celui en dessous suffit						
6	W	manifestation of work	http://rdaregistry.info/Elements/w/P10072	https://access.rdatoolkit.org/en-US	Y	/						
7	W	date of work	http://rdaregistry.info/Elements/w/P10219	https://access.rdatoolkit.org/en-US	N	ATUT 130f	910\$b	Creation Date	N	Structured data		YYYY
8	W	language of representative expres:	http://rdaregistry.info/Elements/w/P10353	https://access.rdatoolkit.org/en-US	N	ATUT 387h	910\$c	Language	N	Structured Data	table Marc21-languages	
9	W	author agent	http://rdaregistry.info/Elements/w/P10061	https://access.rdatoolkit.org/en-US	Y	1XX/7XX de la notice 'manifesta	915\$a	Author	Y	Unstructured data		Begin with a
10	W	numbering of part	http://rdaregistry.info/Elements/w/P10012	https://access.rdatoolkit.org/en-US	N	ATUT 130n						
11	W	part of work	http://rdaregistry.info/Elements/w/P10019	https://access.rdatoolkit.org/en-US	N	ATUT 130p	773\$t 773\$g	Host item entry	Y	local identifier		
12	W	dissertation or thesis information	http://rdaregistry.info/Elements/w/P10209	https://access.rdatoolkit.org/en-US	N	502 de la notice 'manifestation'	502\$a	Dissertation Note	N	Structured data		University, Faculty, Department, YYYY
13	W	academic degree	http://rdaregistry.info/Elements/w/P10077	https://access.rdatoolkit.org/en-US	N	502 de la notice 'manifestation'	502\$b	Dissertation Note	N	Structured data		
14	W	subject	http://rdaregistry.info/Elements/w/P10256	https://access.rdatoolkit.org/en-US	N	6XX de la notice 'manifestation'	à déterminer	à déterminer	Y			Pschouten: 6 bibliografis zoals access person.
15	W	category of work	http://rdaregistry.info/Elements/w/P10004	https://access.rdatoolkit.org/en-US	N	ATUT 380a	380	Genre de l'œuvre	N		RDA content type	
16	W	intended audience of representati	http://rdaregistry.info/Elements/w/P10217	https://access.rdatoolkit.org/en-US	N	ATUT 387g						
17	W	extension plan	http://rdaregistry.info/Elements/w/P10365	https://access.rdatoolkit.org/en-US	N	ATUT 335a	335 (notice bib)				RDA extension plan VES	Pas encore u
18	W	related place of work	http://rdaregistry.info/Elements/w/P10316	https://access.rdatoolkit.org/en-US	N	AUT 370						
19	W	variant title of work	http://rdaregistry.info/Elements/w/P10086	https://access.rdatoolkit.org/en-US	N	ATUT 430						
20	W	frequency	http://rdaregistry.info/Elements/w/P10019	https://access.rdatoolkit.org/en-US	N	310, 321, 008/18 de la notice (p	008/18 310\$a \$b 321\$a \$b	Frequency Current publication frequency Former publication frequency		Structured data	RDA frequency VES	uniquemen

WORK

EXPRESSION+MANIFESTATION (M21-1

ITEM (EXE-97)

PERSON (APEP)

CORPORATE BODY (AORG)

+

Library management system

- Adapt existing fields according to RDA Vocabulary Encoding Schemes (VES).
Examples :

Boek 1XX/7XX 6XX Links Exemplaren (0) Digitale documenten Opmvolging

340 (##) TYPE BOEKBINDING

- Undefined # - Undefined

l

040

a

b

d

e

041

a

a

a

kbr01 - Losbladig

kbr02 - Losbladig met touwtjes gebonden

rdatb:1001 - gelijkde paperback

rdatb:1002 - gebonden

rdatb:1003 - spiraalband

rdatb:1004 - gesloten ringband

rdatb:1005 - open ringband

rdatb:1006 - klembinder

rdatb:1007 - zadelsteekband

rdatb:1008 - gekartonneerde band

Enregistrer Fermer Ajouter dans

'Editions Standaard. Anvers' (13993846)

Notice Corporate Names (A21:7) : KBR - Collectivité [AORGFR]

Collectivité Contrôle de qualité Documents numériques Suivi

510 (2#) RAPPEL DE RENVOI « VOIR AUSSI » - NOM DE COLLECTIVITÉ

2 - Name in direct orde # - Undefined

a 14160002 - Manteau

i

510 rdaa:P50007 - a pour collectivité fondée d'une collectivité

510 rdaa:P50008 - a pour supérieur hiérarchique

510 rdaa:P50009 - a pour collectivité commanditée d'une collectivité

510 rdaa:P50010 - a pour subordonné hiérarchique

510 rdaa:P50011 - a pour collectivité fusionnée

510 rdaa:P50012 - a pour prédécesseur d'une collectivité

510 rdaa:P50013 - a pour résultat de fusion

510 rdaa:P50014 - a pour résultat de scission

510 rdaa:P50015 - a pour collectivité commanditaire d'une collectivité

510 rdaa:P50016 - a pour successeur d'une collectivité

WORK and EXPRESSION

- **One of the biggest discussions: how are we going to add the work and expression levels in our catalogue**
 - It has to be clear for cataloguers how to do it
 - It has to be easy for cataloguers to do it
 - We prefer not to interfere with other kind of authorities (e.g. uniform title in 130 or 240)
 - As national bibliography, we want to create our own ‘work’-records
 - Create dataset of ‘work’-records, not implicit relationships
 - Not relying on external databases (initially), we are responsible for the ‘Belgian’ works (legal deposit)

Library management system



- **Fundamental changes , with the impetus of :**



PHILHARMONIE
DE PARIS

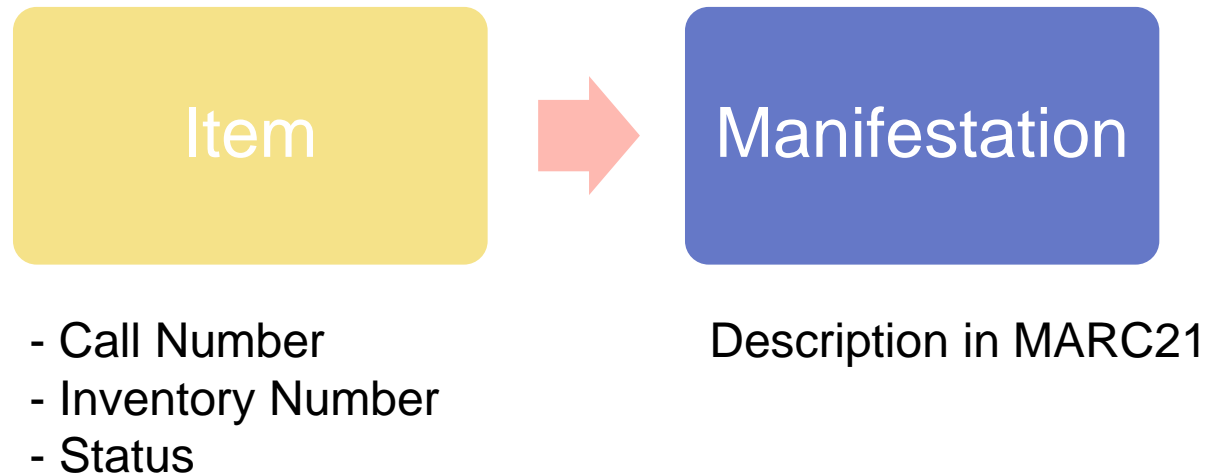


Maison
de la Musique
Contemporaine

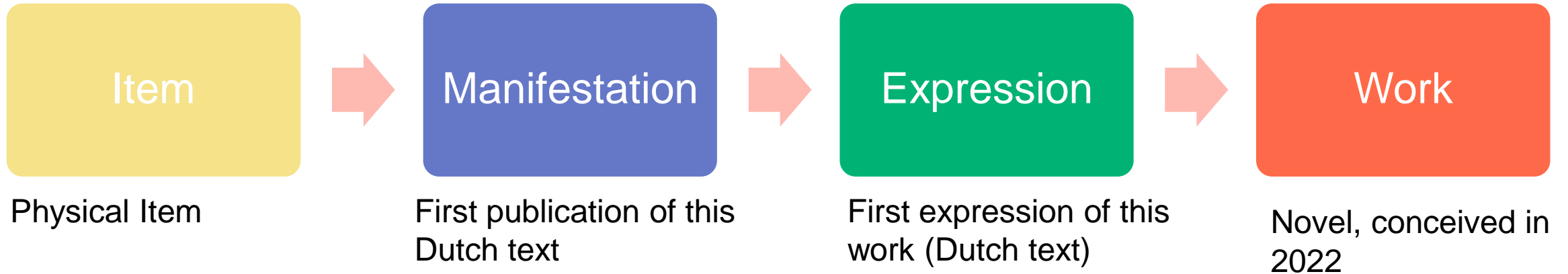
Library Management System

- **The aim of their development:**
 - Precise descriptions of works, expressions and their relationships
 - Facilitate the cataloguer's work
 - Increase search possibilities
- **They created their own datamodel and call it :
“Simplification du modèle” (‘simplifying the model’)**
- **Local MARC-fields**

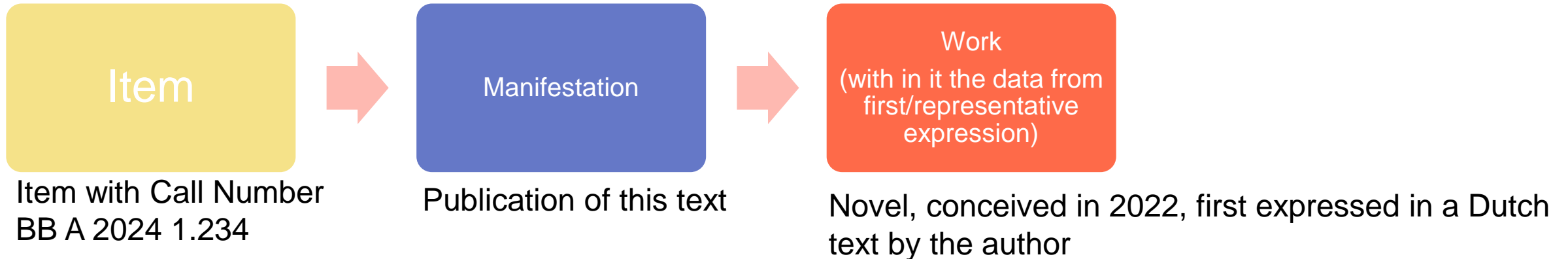
Library management system : now



THEORY (IFLA-LRM)

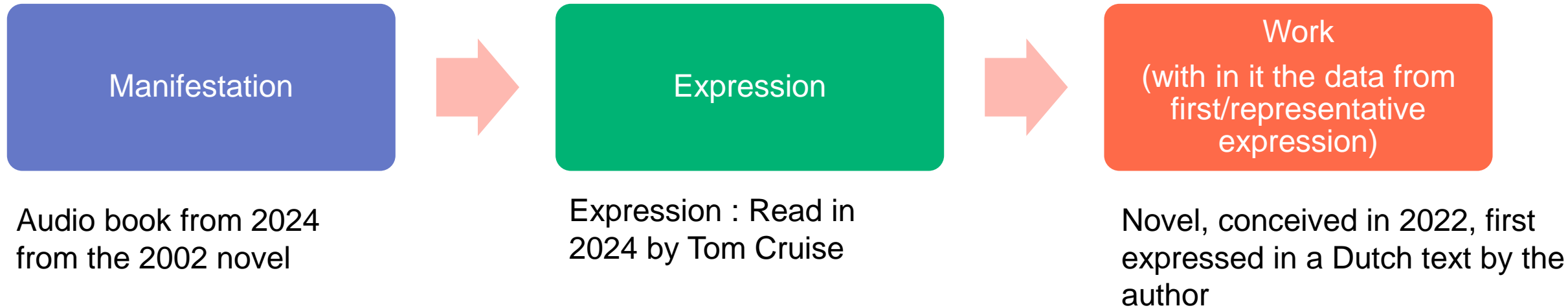


MODEL ARCHIMED



→ Reasoning : First work can not exist without an expression, so we can put them together: simplification : 1 link instead of 2 (in most cases, it will remain at that)

But expression can be added



- BIBFRAME workshop in Europe 2023 (Andreas Andersson, Sweden) , but also our own tests: minority from works has multiple expressions, mostly one work-one expression (never translated, no other editions, no other publication form, etc etc)
- Avoids a huge amount of work

Library management system

- **The biggest advantage : the work element is created based on the data the cataloguer creates in its manifestation record. In other words: The relationship with the work element is made explicit based on the data implicitly drawn from the manifestation. (see demo)**
- **Smooth 'transition' to LRM-cataloging(?)**
- **Avoids double work**

Catalog – example 1

Manifestation – description made by cataloguer	Expression	Work
Description 1 – manifestation Publication from a first, English, expression from a work		
041\$a eng 044\$a -uk 100\$a John Doe 4 aut 245\$a Murder in Helsinki 264\$a Helsinki \$b PublisherX \$c 1997 300\$a 356 pages 336\$a text 337\$a unmediated 338\$a volume 650\$a Forbidden love		

Catalog – example 1

Manifestation – description made by cataloguer	Expression	Work
Description 1 – manifestation Publication from a first, English, expression from a work	Description 2 : work + expression Made by data from description 1, but relationship made explicitly → we generate our own ‘work-database’.	
041\$a eng 044\$a -uk 100\$a John Doe 4 aut 245\$a Murder in Helsinki 264\$a Helsinki \$b PublisherX \$c 1997 300\$a 356 pages 336\$a text 337\$a unmediated 338\$a volume 650\$a Forbidden love	041\$a eng 336\$a text	 100\$a John Doe \$4 aut 245\$a Murder in Helsinki 650\$a Forbidden love

Catalog – example 2

Manifestation – description made by cataloguer	Expression	Work
Description 3 – manifestation Dutch translation from Description 1		
041\$a dut \$h eng 044\$a be 100\$a John Doe 4 aut 245\$a Moord in Helsinki 264\$a Antwerp \$b PublisherY \$c 2007 300\$a 356 pages 336\$a text 337\$a unmediated 338\$a volume 650\$a Forbidden love		

Catalog – example 2

Manifestation – description made by cataloguer	Expression	Work
Description 3 – manifestation Dutch translation from Description 1	Description 4 : new, derived expression, made by data from description 3	Description 2 : already existent (example 1)
041\$a dut \$h eng 044\$a be 100\$a John Doe 4 aut 245\$a Moord in Helsinki 246\$a Murder in Helsinki (original title) 264\$a Antwerp \$b PublisherY \$c 2007 300\$a 356 pages 336\$a text 337\$a unmediated 338\$a volume 650\$a Forbidden love 700\$a Jan Jacobs \$4 trl	041\$a dut 100\$a John Doe \$4 aut 245\$a Moord in Helsinki 336\$a text 700\$a Jan Jacobs \$4 trl	041\$a eng (first expression) 100\$a John Doe \$4 aut 245\$a Murder in Helsinki 336\$a text (first expression) 650\$a Forbidden love

Live demo

<https://poc-lrm.archimed.fr/pro/ils/>

OPAC

Example OPAC